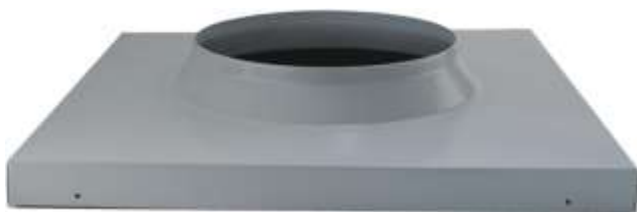




SOLATUBE. Curb mount flashing



Parts list

	Qty
Tile flashing	1
Flashing insulator	1
Sealant	1
Flashing screws 50mm (in fastener kit)	8

First complete the Solatube 160DS and 290DS installation instructions Steps 1- 4

Step A – affix the flashing insulator

Trim the flashing insulator so it can be taped to the underside of the flashing without protruding. Align the flashing insulator to the underside of the roof flashing, matching the centres, and apply the aluminium tape provided firmly along each outside edge of the flashing insulator to securely fix the flashing insulator to the flashing (**diagram 1**). Later, when the top tube is inserted into the flashing up-stand, the flashing insulator will be stretched around the tube, creating a seal.

Diagram 1



Step B – position and secure the flashing

Centre the curb mounted flashing onto the pre-constructed or manufactured curb (**diagram 2**). Check that flashing fits and that there are no obstructions in the path of the tube. Allow sufficient gap between the flashing and curb up-stand for the roofing material.

Remove the flashing and run a generous line of sealant on the top of the curb where it will make contact with the underside of the flashing to seal. Place the flashing back on the curb and secure the sides of the flashing into the curb up-stand with the flashing screws provided. Ensure the flashing is firmly in position and the roof is fully watertight.

Diagram 2



Please now continue to Step 6 of the Solatube 160DS and 290DS installation instructions